

We're on the Web!  
hillend-p.schools.nsw.edu.au

We're a Certified  
Crunch&Sip School!



23rd November 2012

# THE GOLDEN QUILL

UNIQUE LOCATION, UNIQUE EDUCATION

## CALENDAR

### NOVEMBER

Visual Arts  
Camp

27th  
28th  
29th

VC Tree House

30th

### DECEMBER

Presentation  
Day

14th

Last Day 2012  
Students

19th

## ATTACHMENTS

Department of Human  
Services Brochure



*Thought for  
the Week*

**"The purpose  
of life is a life  
of purpose."**

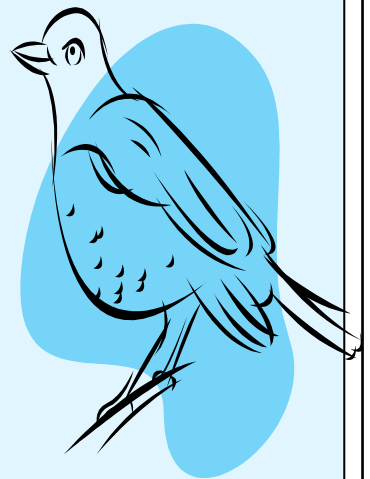
## PRINCIPAL'S REPORT

Dear Parents,  
What a fabulous week we've had after that wonderful rain. The garden is blooming with lots of beetroot, lettuce and corn and the fruit trees have settled in very nicely. Mrs Shanahan's dedication towards school improvements has been rewarded as she has been successful in securing the school a grant to purchase some more fruit trees. Mrs Shanahan is currently in negotiations with Bunnings at Mudgee to investigate how they can assist us with our fruit tree purchases.

Congratulations, Mrs Shanahan on securing this grant. Well done! Jessie and Hannah enjoyed the Orientation Day at the high school on Tuesday and they have declared they are 'ready to go' to high school. Art Camp is next Tuesday, Wednesday and Thursday and all the students should enjoy three days of Art experiences. I'm certainly looking forward to improving my Art skills and working with talented artists from our region. Just a reminder to all students who will be staying at the ranch to return permission notes

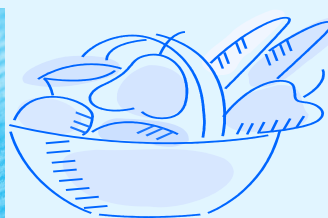
on Monday.  
Congratulations to Grace Browne for being Student of the Week. Have a good weekend.

Michelle Gallop



## VISUAL ARTS CAMP EXCITEMENT

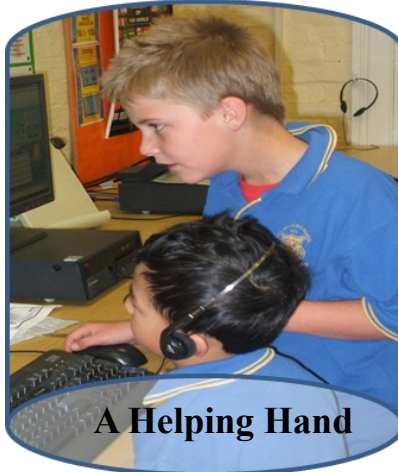
Hill End Public School students and staff are starting to get excited about the upcoming camp. Paint, paper, boards, banners, BBQ, food, brushes, artists and accommodation are just a number of things being organised for next week.



# ANOTHER BUSY WEEK BEGINS



## Spelling



A Helping Hand



**learn**

spelling

growth

maths



## HILL END HEART FOUNDATION WALKING GROUP

Fiona - LEAN Project, visited us today to get an update on the walking challenge, have a look at our gardens. and bring us some healthy snacks She also informed us about the new Hill End Walking Group. Interested persons can meet each Tuesday at 10.00am at the Hill End Health Clinic. Please see Robyn Auld for details.





**SHAUN BROWN'S  
CRICKET COACHING**

**Presents  
Bathurst Cricket Camp**  
Ages: 5 to 16  
Fun, Safe environment  
Coaching since 1990!  
Video Analysis  
Ex-Australian Stars Coaching

**January 21, 22**

For a Free brochure  
FREECALL 1800 35 14 15  
Or visit  
[www.cricketcoaching.com.au](http://www.cricketcoaching.com.au)  
for more information



**SHAUN BROWN'S  
CRICKET COACHING**

**Presents  
Mudgee Cricket Camp**  
Ages: 5 to 16  
Fun, Safe environment  
Coaching since 1990!  
Video Analysis  
Ex-Australian Stars Coaching

**January 10, 11**

**Mudgee High School**

For a Free brochure  
FREECALL 1800 35 14 15  
Or visit  
[www.cricketcoaching.com.au](http://www.cricketcoaching.com.au)  
for more information

## Student of the Week

**For excellent work  
throughout the  
week.**



**sport**

**health**

**fun**

**friends**

Avila  
Hill End Road  
Sally's Flat  
NSW 2795

Dear Mum  
We are in our new farm house now.  
We have got animals all over the place.  
I like playing with my horse and ponies in my bedroom.  
My bedroom is next to Mums bedroom and the toilet.  
My toys are in my bedroom.  
I can see the clothesline from my bedroom.

You can come to my place.



**Love Grace**

# NEWSLETTER BRIEFS

## PRIMARY AND HIGH SCHOOL

### When your teen's new best friend is a bad influence

Best friends are a key part of adolescents' lives. But what do you do when you suspect your child's best buddy is a bad influence? Experts discuss different approaches.

Find out more: <http://www.schoolatoz.nsw.edu.au/wellbeing/behaviour/when-your-teens-new-best-friend-is-a-bad-influence>

## PRIMARY SCHOOL

### Copying and plagiarism

Copying other people's work and presenting it as your own is plagiarism. It's an increasingly common problem in the online world where material can easily be copied and pasted from websites. Students need to acknowledge the ideas of others when they use them in projects, assignments and assessments. Find out more: <http://www.schoolatoz.nsw.edu.au/homework-and-study/homework-tips/copycats-beware>

### Help your kids enjoy reading

How do you make reading a joy and not a chore for your child? One way is to find information and interesting facts about things that intrigue or interest your child in books, magazines or on the internet. Read and talk about what you find out. Here are some other tips: <http://www.schoolatoz.nsw.edu.au/homework-and-study/english/english-tips/ten-ideas-to-help-your-child-with-reading>

## HIGH SCHOOL

### Exploring careers by subject

Help your child to broaden their ideas about work and career paths. Bullseye posters have been designed to help your child assess career and training options based on 33 subjects. Each includes sample career biographies by young people. Find out more:

<http://www.deewr.gov.au/Schooling/CareersandTransitions/CareerDevelopment/Resources/Pages/CareerBullseyeposters.aspx>

### Work and study advice

There is a range of school staff who can help your child navigate their way through study and training options. Student support is provided by key people such as careers advisers, transition advisers, year advisers and school counsellors. Find out more:

<http://www.schools.nsw.edu.au/leavingschool/schoolleaveage/options/atyourservice.php>



## Hill End Public School

*Unique Location, Unique Education*

Tambaroora Street

Hill End NSW 2850

Phone: 02 63378265

Fax: 02 63378307

[hillend-p.school@det.nsw.edu.au](mailto:hillend-p.school@det.nsw.edu.au)

[www.hillend-p.schools.nsw.edu.au](http://www.hillend-p.schools.nsw.edu.au)

