

**TERM 1 TOPIC  
PHYSICAL FORCES**



**Term 1 Week 11  
12th April 2024**



HILL END PUBLIC SCHOOL - 154 YEARS OF EDUCATION

## A WRAP

After a great term of studying forces we rounded the it off yesterday with the students presenting and playing the games they designed using forces. Some of the games created by the student used gravity, some used simple push and pull forces, and some of the games used magnetism – well done kids.

It was also very pleasing to note that many of the games designed by the students also had a strong focus on Maths! Today we'll be concluding our studies with a series of experiments in pushing, pulling and magnetism.

## Anzac Day



Anzac day this year falls during the second week of the school holidays. If children are attending the ceremony please let me know (a text will be fine) and we'll gather at 'the usual spot' around 10.50am. We have a school wreath to lay. Students who attend as a part of the school should be present in full school uniform.

## Communication



On reflection and evaluation we have decided to diversify the methods in which the school communicates with parents, families and the wider community. These changes will allow a greater focus on student outcomes and academic support. The changes include a shift to electronic communication, our noticeboards and a refinement in Golden Quill newsletters. As a result the Golden Quill will be published three times per term, still packed with news, student work and information.

## Happy holidays !



## CALENDAR

### APRIL

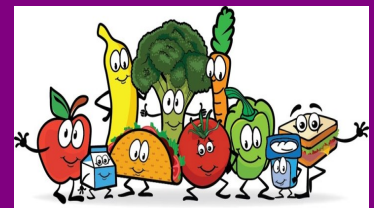
<b>End of Term 1</b>	<b>12</b>
<b>Anzac Day</b>	<b>25</b>
<b>Term 2 Begins</b>	<b>30</b>

### MAY

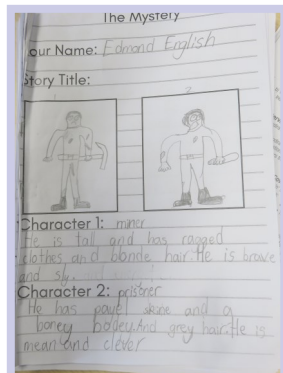
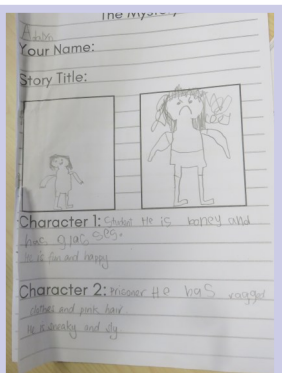
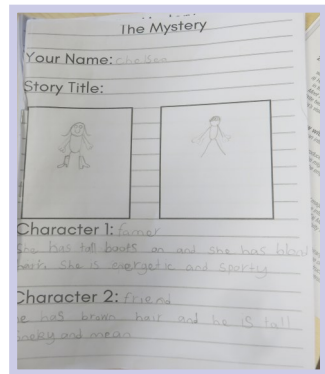
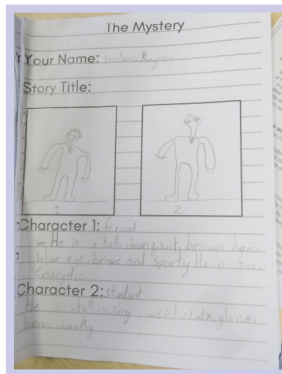
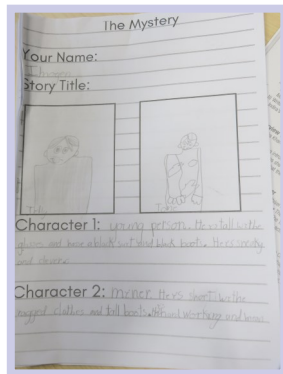
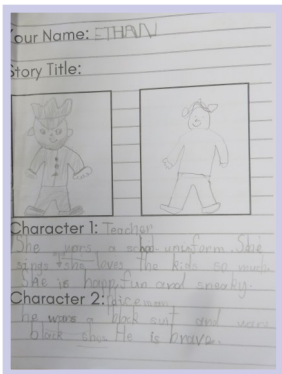
<b>Museum Excursion</b>	<b>14</b>
-------------------------	-----------

## ATTACHMENTS

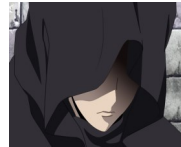
- ◆ Nutrition Snippet
- ◆ Child Safety Handbook Flyer
- ◆ Communications Note



# STUDENT WRITING, A MYSTERY DRAFT



The students are trying a new approach to their story writing. These are some drafts of their mystery stories so far. The students have created and described two characters who will have main roles in their story.



## Stem Project



The students each were given the challenge to create their own game using forces and motion. Using their imagination, they each created a totally different game. The students worked out instructions on how to play the games, including age groups that the game would suit. They presented their games to the rest of the class, where they all had fun testing them out.

# ART with MR G

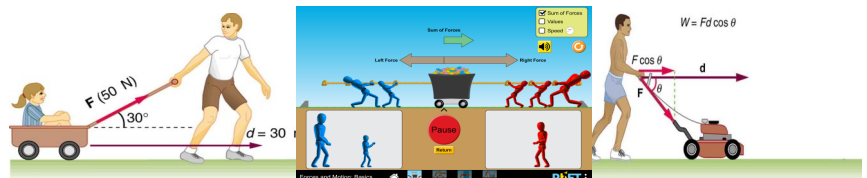


The students were presented with a piece of paper on which half a picture was drawn. They used their imagination to complete the other half, then painted it in water colour paints.



## Student of the Week

### Edmond English



# HEALTH CLINIC NEWS

Hill End Health Clinic normal opening hours are:

Mondays 8.30am - 5.00pm.

Wednesday 8.30am - 1.00pm

Friday 8.30am - 5.00pm.

The next Doctors visit is to be advised.

For Doctor appointments please book in at Ochre Medical Centre: 6331 9444.

Community Nurse Lisa Mallard's new work mobile number is: 0403 087 198.

Hill End Health Clinic landline 6337 8263

Please support our Community Nurse Lisa Mallard



## Test runs of the Students Forces Games

The students all enjoyed testing and playing each others creative games. They were asked to score each game on the use of forces and motion in the design, the presentation of the game, is it interesting and fun to play, is it safe and is it well presented.



## Hill End Public School

*Unique Location, Unique Education*

Tambaroora Street  
Hill End NSW 2850  
Phone: 02 6337 8265  
Fax: 02 6337 8307

[hillend-p.school@det.nsw.edu.au](mailto:hillend-p.school@det.nsw.edu.au)  
[www.hillend-p.schools.nsw.edu.au](http://www.hillend-p.schools.nsw.edu.au)  
[facebook.com/](https://www.facebook.com/hillendps)

